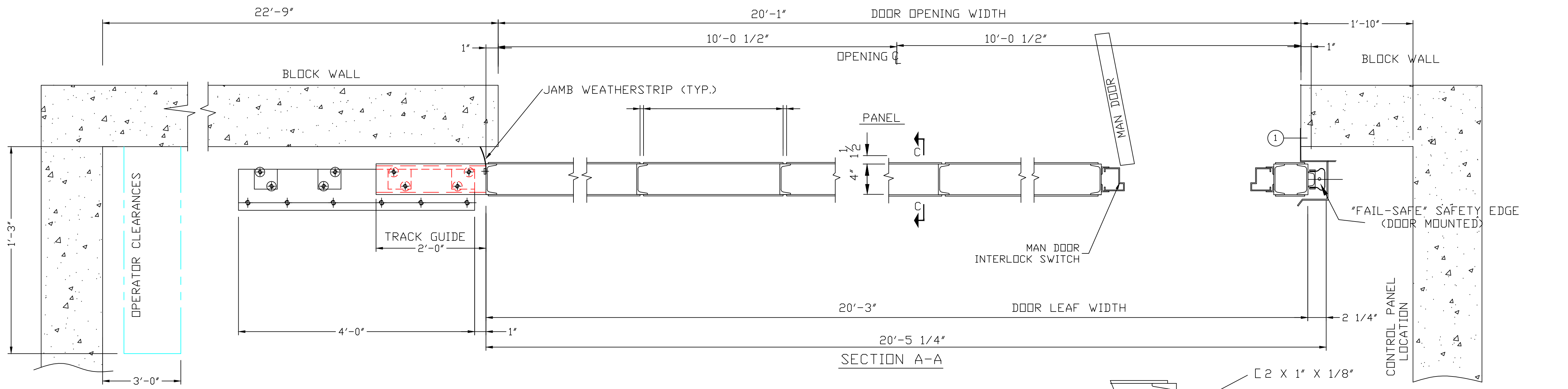


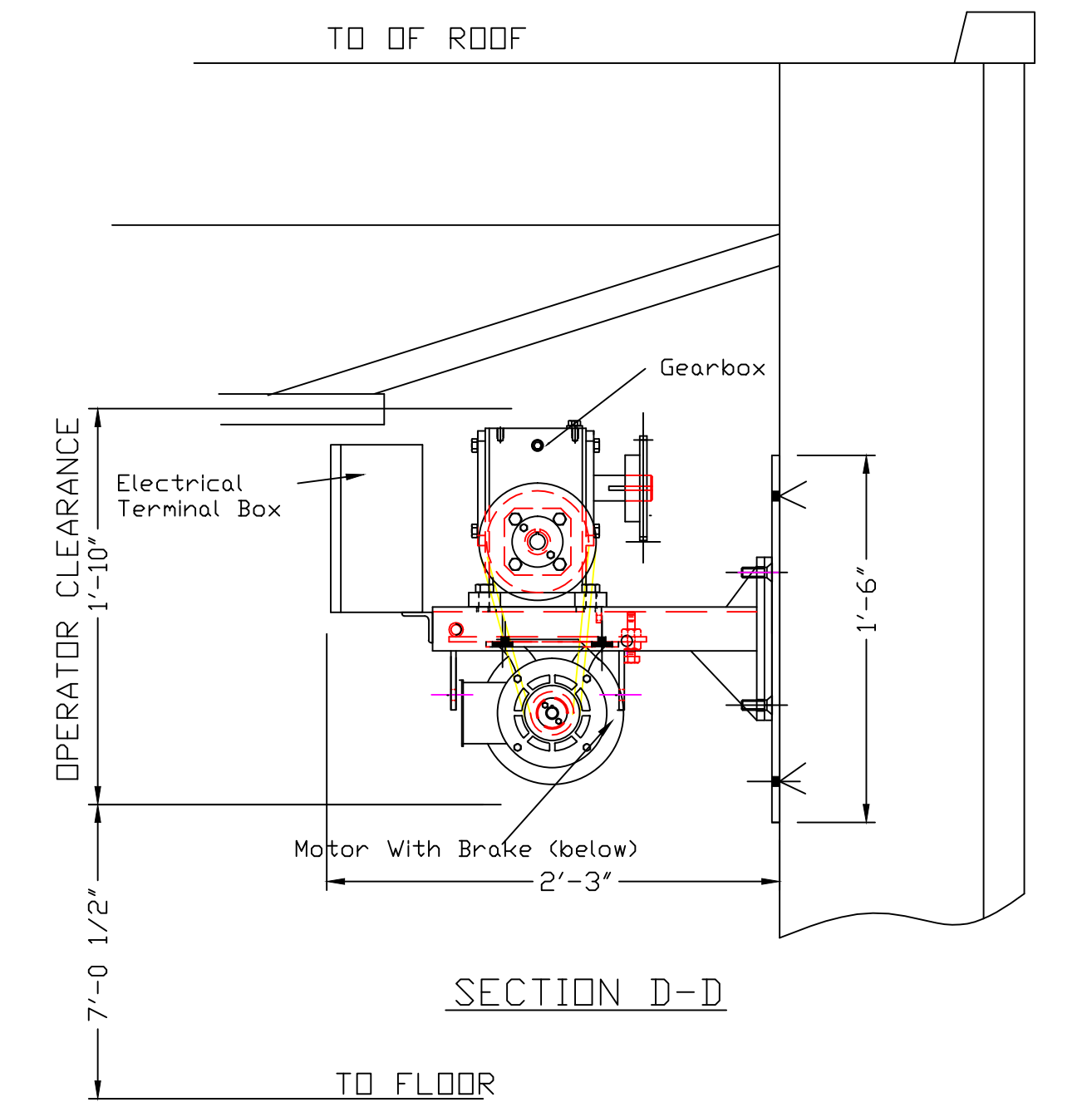
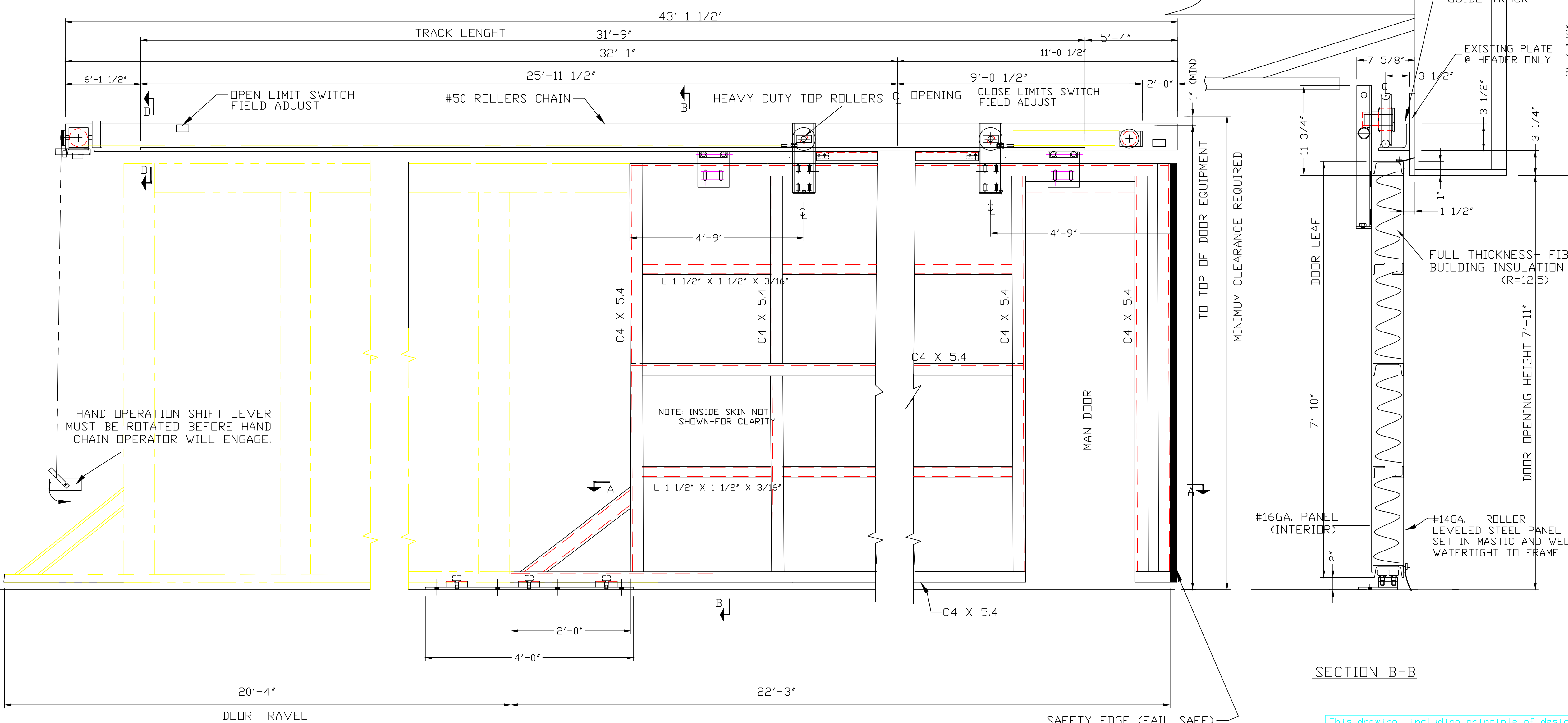
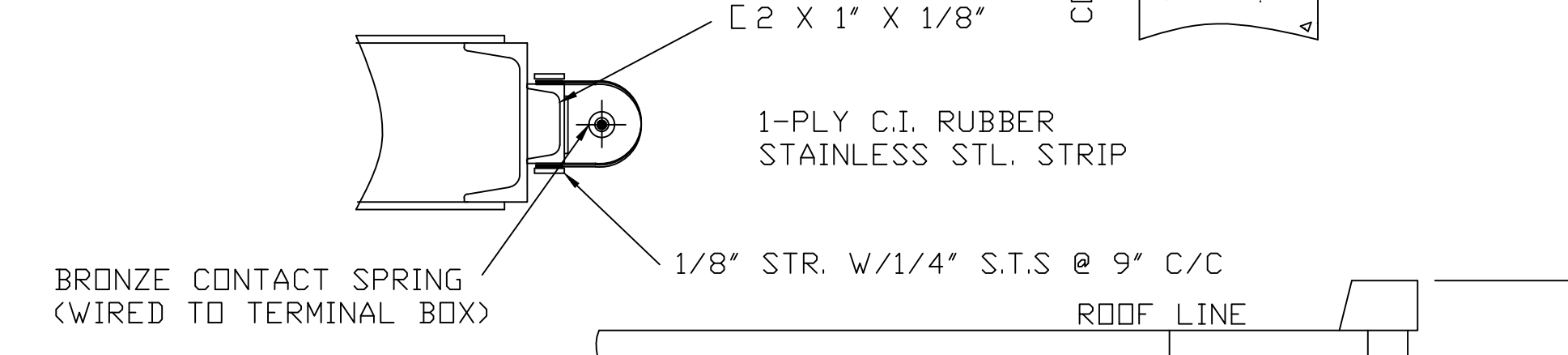
BILL OF MATERIAL

ITEM	TOTAL QTY.	UNIT QTY.	MARK	DESCRIPTION	JOB#	SHEET#	REMARKS
------	------------	-----------	------	-------------	------	--------	---------



- MOTOR OPERATOR- SHOP WIRED TO TERMINAL BOX
- 3/4 H.P. MOTOR-460V-3Ø-60HZ
 - SOLENOID DISC BRAKE
 - HAND CHAIN & SHIFT DEVICE
 - SAFETY CLUTCH
 - V-BELT

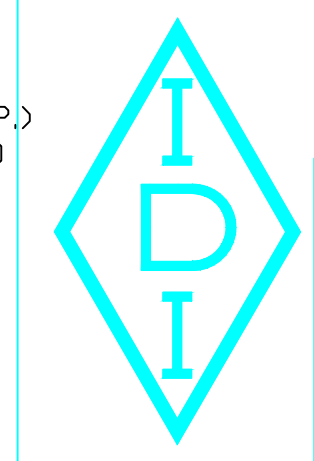
NOTE: DOOR TOWER AND GUIDE TO BE ADEQUATELY BRACED TO BUILDING WALL CONSTRUCTION



SHOP PAINT : ONE COAT GRAY METALLIC PRIMER

TO FIELD	RET.:		
TO SHOP			
SENT FOR APPROVAL			
REV	DATE	BY	DESCRIPTION

INTERNATIONAL DOOR, INC.
(734) 469-3000



8001 Ronda Dr. Canton, Michigan 48187
PROJECT: FORD MOTOR COMPANY WORLD HEADQUARTERS LAWN MAINTENANCE BUILDING DEARBORN, MI. 48121

DRAWING TITLE: GENERAL ARRANGEMENT FOR HORIZONTAL SLIDE DOOR - DOUBLE SKIN - INSULATED WITH ELECTRIC OPERATOR

DOOR NUMBER: _____ OPENING SIZE: 20'-1" X 7'-11"

ARCH.	CONTR.	DRAWN: RB	DATE	JOB NO.
CHECKED: DS	CUSTOMER NO.	APPROVED: DS	SHEET	OF

This drawing, including principle of design, is the property of International Door, Inc. It must not be reproduced in any manner nor submitted to outside parties for examination without our consent. It shall be used only as a means of reference to work designed or furnished by us, unless expressly authorized and consented to in writing by International Door, Incorporated, Canton, Michigan.

DO NOT SCALE DRAWING